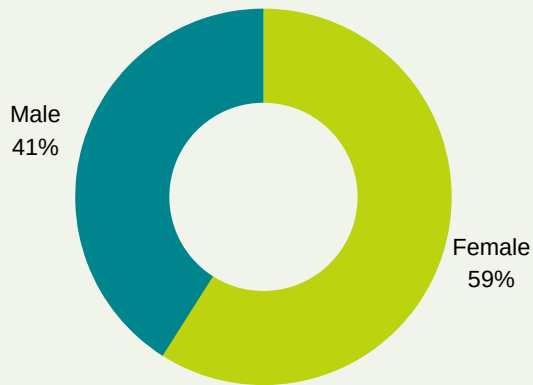


COMMUNITY COLLEGE OF RHODE ISLAND

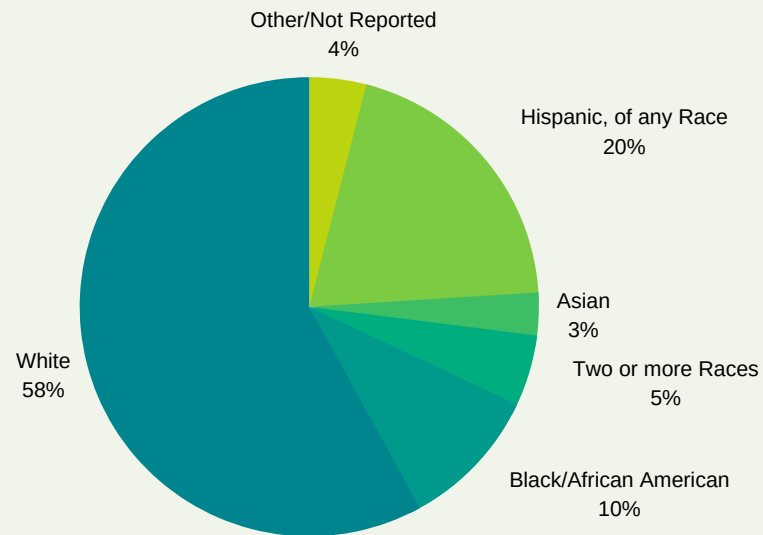
SPRING 2017 ENROLLMENT

Office of Institutional Research and Planning
(data as of February 8, 2017)

Gender



Race/Ethnicity

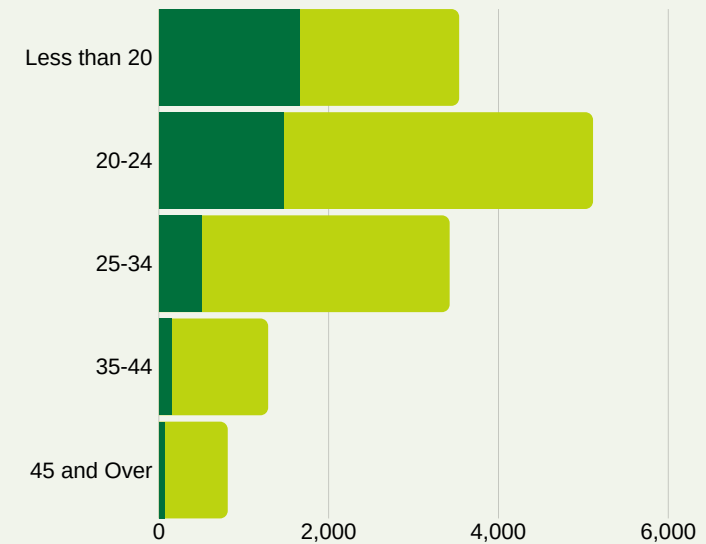


Residency

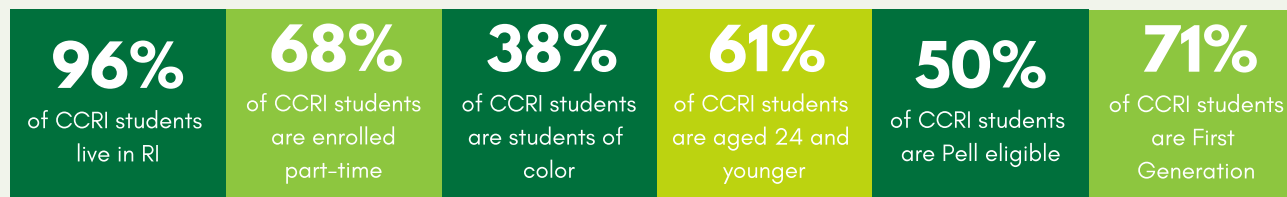
STATE	TOTALS
Rhode Island	13,545
Connecticut	79
Massachusetts	497
Other	25

Headcount Enrollment: 14,146
FTE: 8,188

Enrollment by Age Group



ENROLLMENT FAST FACTS



AGE	FULL-TIME	PART-TIME	TOTAL
Less than 20	1,653	1,879	3,532
20-24	1,461	3,645	5,106
25-34	497	2,923	3,420
35-44	148	1,134	1,282
45 and over	65	741	806