

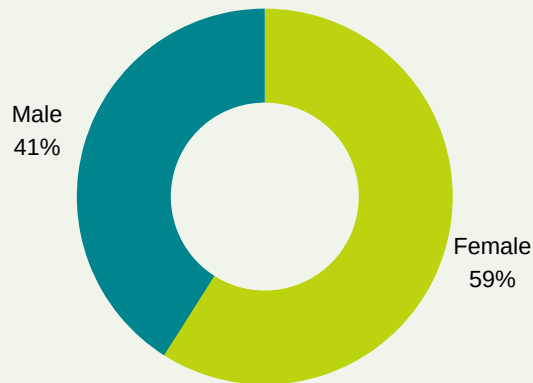
# COMMUNITY COLLEGE OF RHODE ISLAND

## SPRING 2016 ENROLLMENT

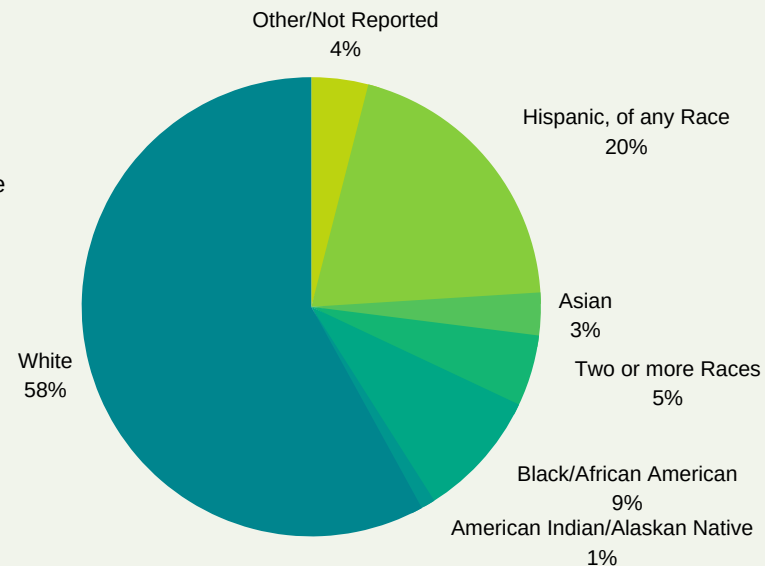
Office of Institutional Research and Planning  
(data as of February 11, 2016)

**Headcount Enrollment: 15,027**  
**FTE: 8,566**

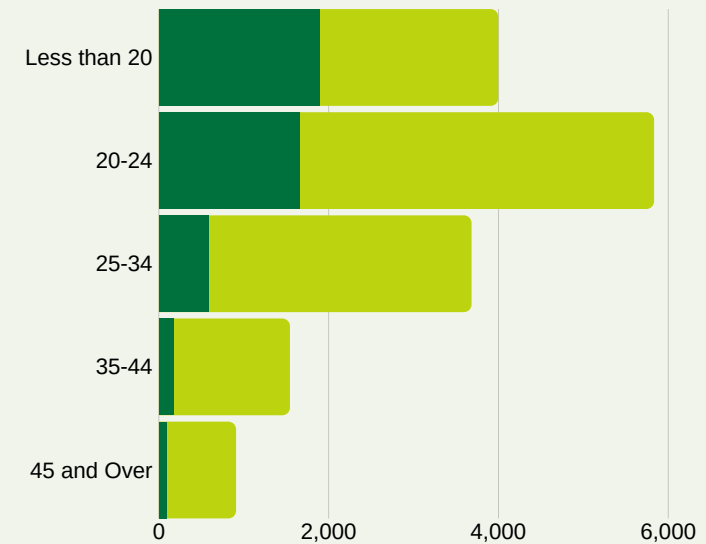
### Gender



### Race/Ethnicity



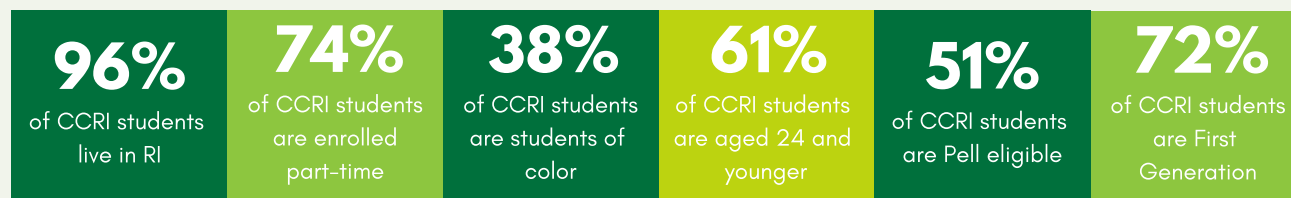
### Enrollment by Age Group



### Residency

STATE	TOTALS
Rhode Island	14,442
Connecticut	62
Massachusetts	484
Other	39

### ENROLLMENT FAST FACTS



AGE	FULL-TIME	PART-TIME	TOTAL
Less than 20	1,770	2,099	3,869
20-24	1,364	3,908	5,272
25-34	549	3,096	3,645
35-44	132	1,229	1,361
45 and over	61	819	880