

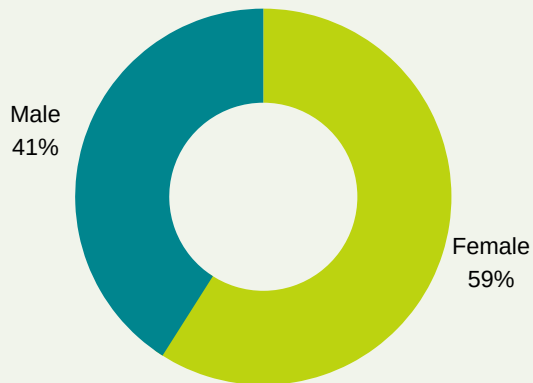
COMMUNITY COLLEGE OF RHODE ISLAND

SPRING 2015 ENROLLMENT

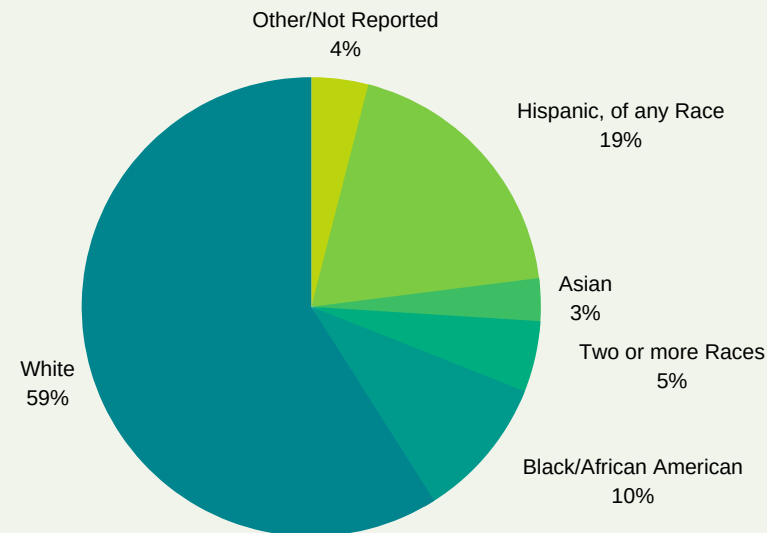
Office of Institutional Research and Planning
(data as of February 12, 2015)

Headcount Enrollment: 15,881
FTE: 9,262

Gender



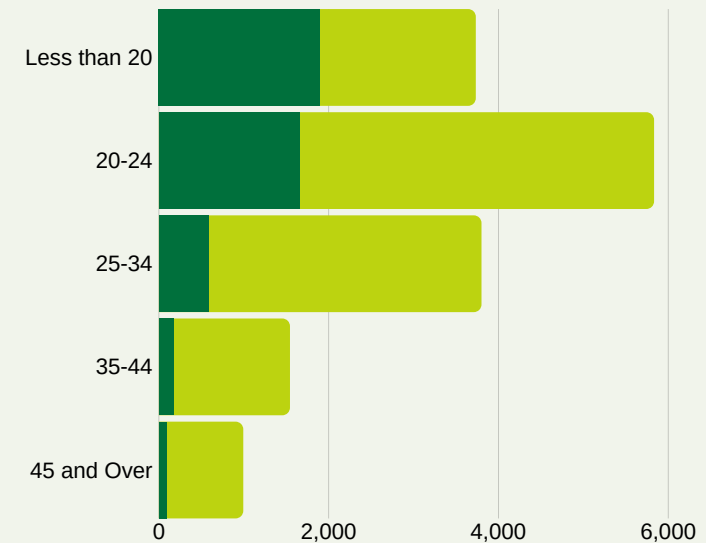
Race/Ethnicity



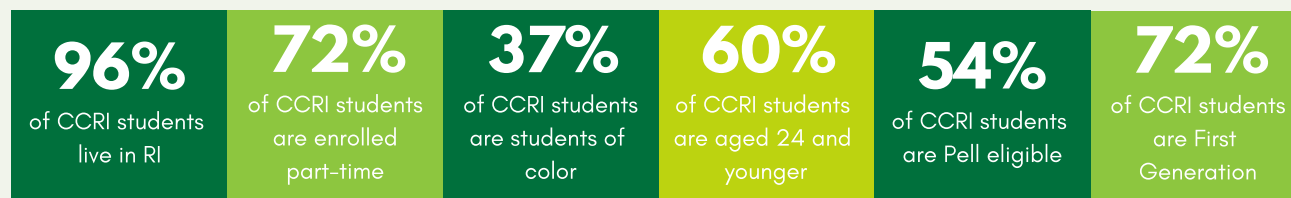
Residency

STATE	TOTALS
Rhode Island	15,247
Connecticut	77
Massachusetts	519
Other	38

Enrollment by Age Group



ENROLLMENT FAST FACTS



AGE	FULL-TIME	PART-TIME	TOTAL
Less than 20	1,894	1,834	3,728
20-24	1,656	4,172	5,828
25-34	580	3,215	3,795
35-44	173	1,366	1,539
45 and over	85	904	989