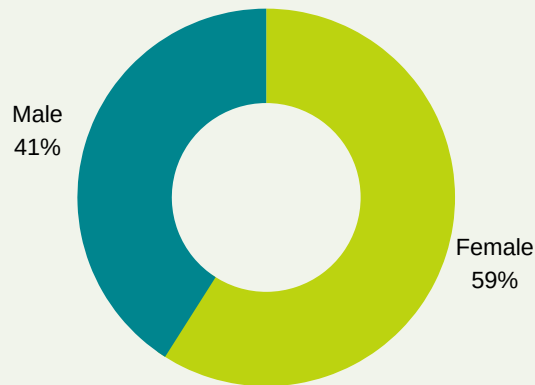


# COMMUNITY COLLEGE OF RHODE ISLAND

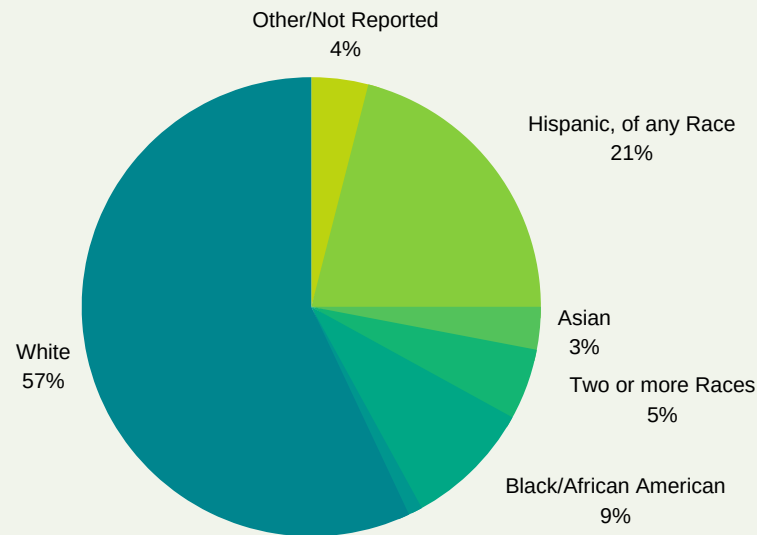
## FALL 2017 ENROLLMENT

Office of Institutional Research and Assessment  
(data as of September 21, 2017)

### Gender



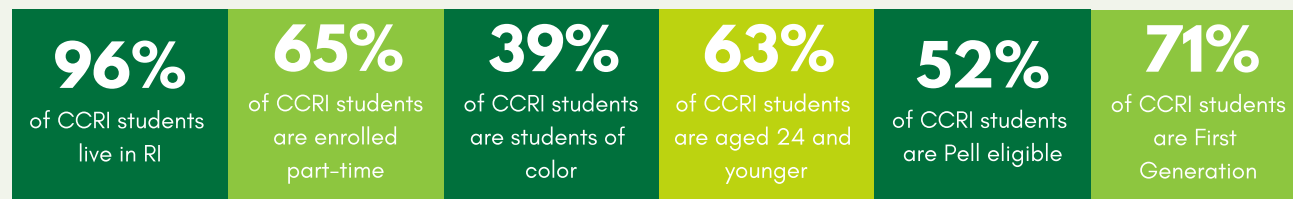
### Race/Ethnicity



### Residency STATE

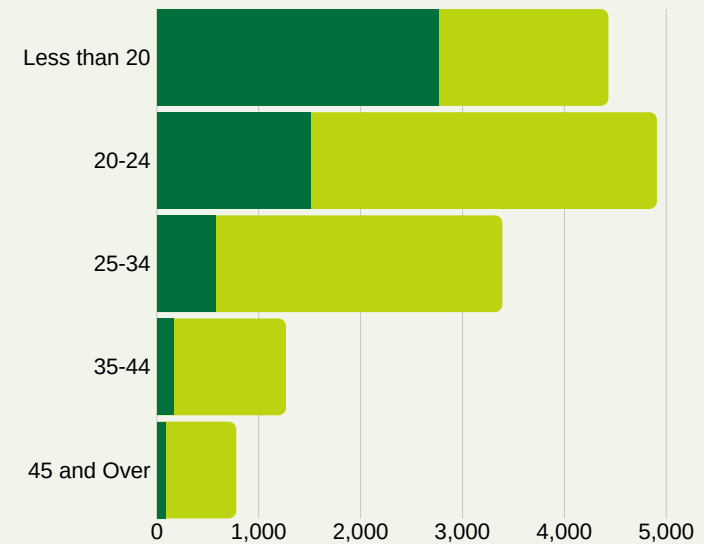
STATE	TOTALS
Rhode Island	14,153
Connecticut	95
Massachusetts	474
Other	36

### ENROLLMENT FAST FACTS



**Headcount Enrollment: 14,758**  
**FTE: 9,246**

### Enrollment by Age Group



AGE	FULL-TIME	PART-TIME	TOTAL
Less than 20	2,763	1,665	4,428
20-24	1,510	3,394	4,904
25-34	578	2,809	3,387
35-44	166	1,097	1,263
45 and over	82	693	775