

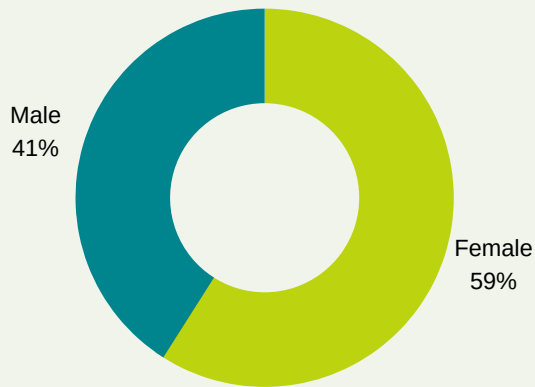
COMMUNITY COLLEGE OF RHODE ISLAND

FALL 2016 ENROLLMENT

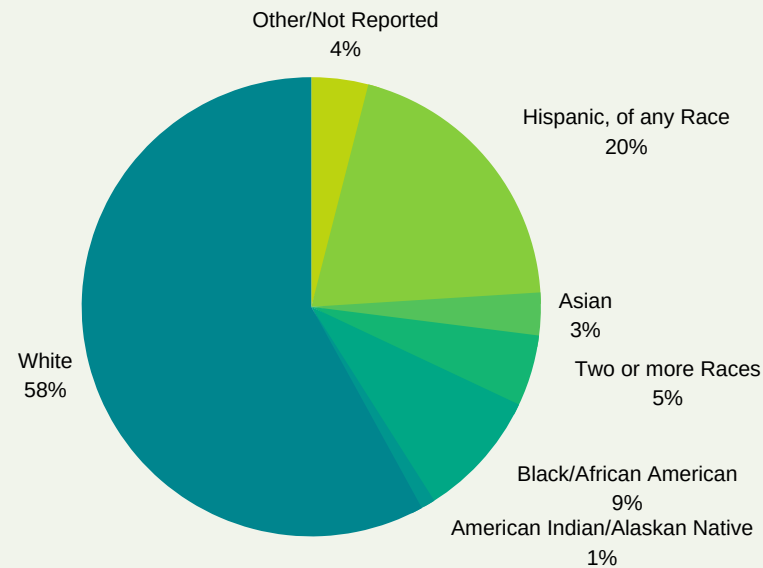
Office of Institutional Research and Assessment
(data as of September 22, 2016)

Headcount Enrollment: 15,101
FTE: 8,998

Gender



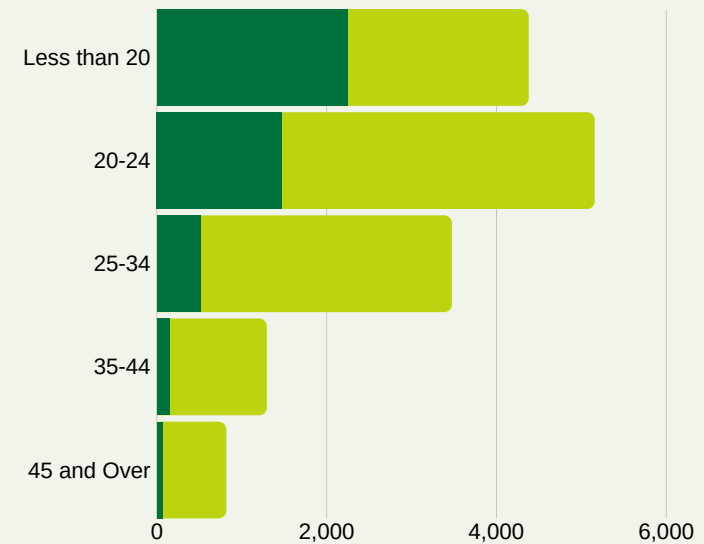
Race/Ethnicity



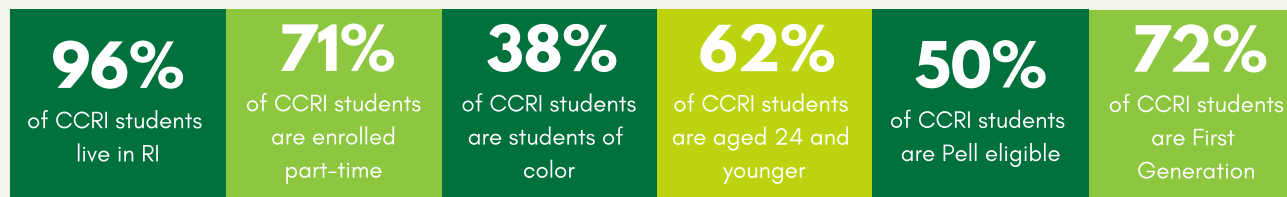
Residency STATE

| STATE | TOTALS |
|---------------|--------|
| Rhode Island | 14,468 |
| Connecticut | 84 |
| Massachusetts | 519 |
| Other | 30 |

Enrollment by Age Group



ENROLLMENT FAST FACTS



| AGE | FULL-TIME | PART-TIME | TOTAL |
|--------------|-----------|-----------|-------|
| Less than 20 | 2,241 | 2,134 | 4,375 |
| 20-24 | 1,472 | 3,680 | 5,152 |
| 25-34 | 545 | 2,955 | 3,470 |
| 35-44 | 149 | 1,141 | 1,290 |
| 45 and over | 64 | 749 | 813 |