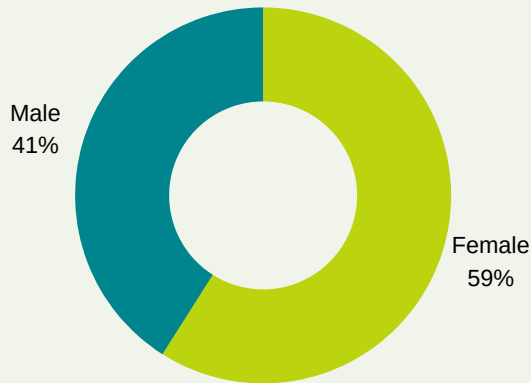


COMMUNITY COLLEGE OF RHODE ISLAND

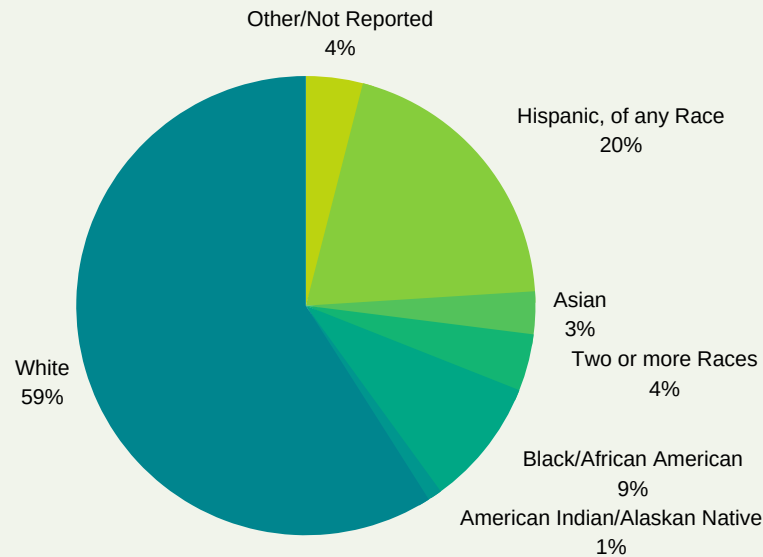
FALL 2015 ENROLLMENT

Office of Institutional Research and Assessment
(data as of September 24, 2015)

Gender



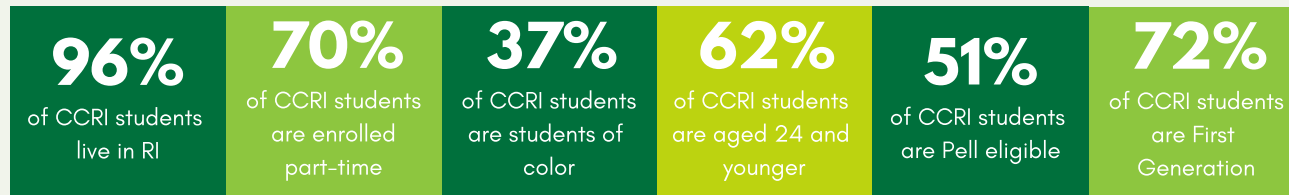
Race/Ethnicity



Residency STATE

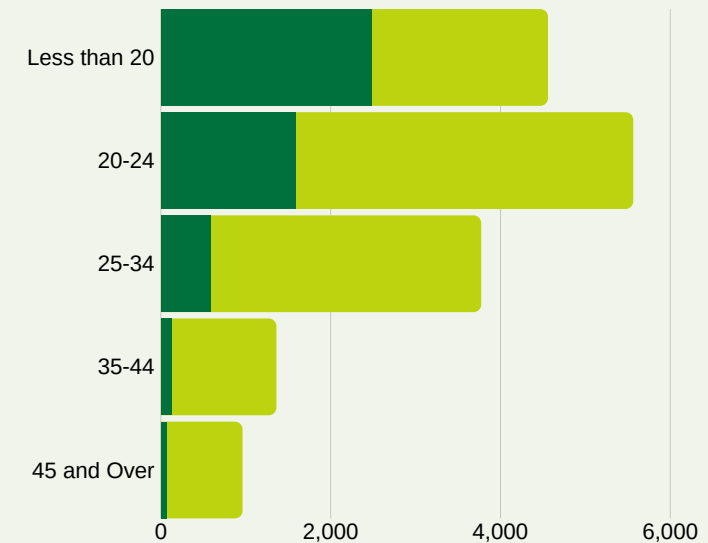
| STATE | TOTALS |
|---------------|--------|
| Rhode Island | 15,525 |
| Connecticut | 78 |
| Massachusetts | 557 |
| Other | 35 |

ENROLLMENT FAST FACTS



Headcount Enrollment: 16,195
FTE: 9,690

Enrollment by Age Group



| AGE | FULL-TIME | PART-TIME | TOTAL |
|--------------|-----------|-----------|-------|
| Less than 20 | 2,476 | 2,079 | 4,555 |
| 20-24 | 1,585 | 3,974 | 5,559 |
| 25-34 | 583 | 3,185 | 3,768 |
| 35-44 | 128 | 1,228 | 1,356 |
| 45 and over | 64 | 893 | 957 |