



COMMUNITY COLLEGE OF RHODE ISLAND

Network Security

CNVT 2200 Section 102 Spring 2025

Instructor John Mowry
Telephone 401-825-2138

E-mail jmowry@ccri.edu

If you put @my.ccri.edu, you will be sending an email to a student at CCRI and not to me. Any time you want to email me for this class, you **must** have **CNVT-2200-102** in the subject. If you do not do this, I may not give you a response within 24 hours. I do not answer emails between 9 pm and 8 am on Monday to Saturday; or on weekends at any time.

Office Hours See Office Door (Knight Campus Office 2126)

Class Sections 102 Monday and Wednesday 6:00 PM-8:50 PM, starts 1/22 ends 5/7

Credit Hours 4 Credit Hours, 3 Lecture Hours & 3 Laboratory Hours per week, based on a fifteen-week schedule.

Administrative Assistant Donna Scattone (825-2155)

Instructional Material and Web Sites

1 CCRI Lesson Web Site www.netacad.com (Network Security 1.0)

2 Cisco Academy Assessment Web Site <http://netacad.com>

3 J Mowry CCRI Website https://www.ccri.edu/faculty_staff/comp/jmowry

4 Blackboard www.blackboard.ccri.edu Material including PowerPoint slides and Grading will be also available here. Detailed material as well as full-instructional material will be available on the Cisco Netacad website listed above. All exams will be administered through the Netacad website.

Mission of the Computer Science Department:

The mission of the Computer Studies and Information Processing Department at the Community College of Rhode Island is to provide high quality education in the areas of computer science and information technology to a diverse student population. We offer programs of study that provide our students with the skills necessary for transfer, career success, and lifelong learning. With programs in: Cybersecurity, Computer Support Specialist, Networking Technology, Computer Programming, and Web Technologies we offer a variety of options in the fields of computer science and information technology.

Course Description:

The Security course provides a next step for individuals who want to enhance their networking skill set to help meet the growing demand for network security professionals. Course introduces the core security concepts and skills needed for the installation, troubleshooting, and monitoring of network devices to maintain the integrity, confidentiality, and availability of data and devices.

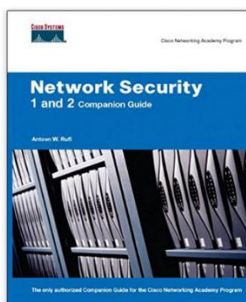
Course Delivery Mode: The course is comprised of both Lecture and Laboratory. There will be both an on-line final as well as a Practical, Hands-On final. All exams will be taken In-Person.

Course Expectations: Students are to follow the rules and regulations as outlined in the Student Handbook, available on-line at:

http://www.ccri.edu/advising/student_services/handbook.html

Additional Learning Material:

Textbook, (Not Required) (All reading material is available on the Netacad website.)



Network Security 1 And 2 Companion Guide: Cisco Networking Academy Program

by Antoon W. Ruffi (Author)

- ISBN-10: 1587131625
- ISBN-13: 978-1587131622

Grading Policies

Skills:

Journal-Entries 5% Due: Day of assigned Final Exam

Labs and Class Participation 10%

Practical Final 40%

Research Paper 10% Due: April 23, 2025 @ 6:00 PM

Academic:

Quizzes 10%

Final 25%

Final Grades: Final grades will be calculated using a mathematical scale utilizing statistical Standard-Deviation methods. The following chart is for reference purposes only! Your instructor reserves the right to evaluate and adjust final grades.

Grading Scale:

Percentage	Letter Grade
94% - 100%	A
90% - less than 94%	A-
87% - less than 90%	B+
84% - less than 87%	B
80% - less than 84%	B-
77% - less than 80%	C+
70% - less than 77%	C
67% - less than 70%	D+
60% - less than 67%	D
Below 60%	F

Verification of Enrollment: Per federal financial aid regulations, CCRI is required to verify student enrollment. All faculty members are required to complete a verification of enrollment per the dates in the College Calendar. Students can confirm enrollment through attendance at any academically related activity, a sign-in sheet will be available each class, or by emailing me explaining why you have not attended class or completed the labs in the first week.

Attendance:

Attendance is required and all physical labs will be completed in the CCRI laboratories without exception. In-person labs that are completed on any simulator and not on the physical networking equipment in the CCRI laboratories, will not be accepted. Students are expected to attend all class meetings in-person. A maximum of three unexcused absences will result in the student receiving a withdrawal, either a WF or a WP, from the course! Students can inform the instructor prior to an absence that cannot be avoided.

Incomplete Grade:

This temporary grade designation is awarded at the end of a course. It is awarded only when a student is **PASSING**, has completed at least 75 percent of the course and is unable to complete the course due to extenuating circumstances (e.g., illness, death, unforeseeable accident, unavoidable circumstance).

Late Assignments:

Since this course would meet 4-hours in person and have 8-hours of reading or homework per-week, you are expected to be putting in 12-hours on this course per college policy. All assignments to be turned in to the instructor will have a due-date prescribed and late assignments will be graded at 75% accordingly at the discretion of your instructor.

Laboratory Exercises:

The in-person laboratory exercises **must** additionally be completed on laboratory equipment, either during class time or open laboratory times. If completed during open laboratory times, the exercise will also **require** the laboratory supervisor to sign and date the lab before submittal.

Ninety percent (90%) of the in-person labs must be completed and submitted for course completion.

Course Outcomes:

As a result of this course, a student will be able to:

- Describe security threats facing modern network infrastructures, explain network mitigation techniques, and the basics of securing a network
- Secure administrative access to network devices and implement secure network management and reporting
- Implement Authentication, Authorization and Accounting (AAA) on network devices
- Mitigate threats to networks using ACLs and firewall technologies to secure the network perimeter
- Implement intrusion detection and prevention, configure Intrusion Prevention System (IPS) and Intrusion Detection System (IDS) to mitigate attacks on the network
- Describe methods for implementing data confidentiality and integrity

Time Management

1. Course will meet for two (2) Lecture Hours and, two (2) laboratory hours per week of instruction. Based on a 15-week schedule. Shorter courses will meet respective to the number of class meetings
2. Course will meet for sixty (60) hours of combined instruction and laboratory exercises.
3. Students are expected to spend an equal amount of time (60 hours) in reading the curriculum, and studying related material in addition to the required lecture/laboratory.
4. All Packet Tracer lab activities are to be completed as homework assignments

Practical Exam

- The practical exam will encompass a majority of concepts and procedures developed during the laboratory experiments and required readings.
- The practical exam will be totally "hands-on" including routing and switching equipment as well as security equipment and programs related to a secure network environment.
- Absolutely no electronic devices are allowed during the exam, including USB's, mobile phones or any other media.
- **Hand-Written** notes will be allowed for use during the Practical Exam only.

Research Paper:

You are the Emergency Management Director of a small island nation. Your nation has come under Cyber-attack and the attackers have made non-functional the Communications system (Phone, Internet, and Cellular), Water supply, Electrical, Natural Gas, and Waste Treatment. Your staff assures you that each system can be recovered but will take an undetermined time period. You must decide what system should be made operational first with the limited staff available to you.

In your paper, explain what system you would bring back first and your reasoning behind making your decision. Take into account possible outcomes from your choice.

As a research paper, all sources of information must be properly footnoted and identified. The paper will be delivered as a Word document, single-sided, include a cover page, and using a 12pt font. Your findings will be presented during a class meeting and your justification for decisions will be questioned and discussed.

Journal-Entries:

The Journal is your **Notebook**. The Notebook is to be **Hand-Written** and presented to your instructor on the date specified. The Notebook must have your name clearly printed on the front cover, either inside or outside, or if using a binder on the first page.

Examinations

1. All exams, excluding the practical exam, will be a combination of multiple choice, fill-in the blank, matching as well as simulations.

Other Policies

1. The student expected to complete the On-Line lessons outside of class time.
2. All quizzes must be taken in class and will not be available from the student web site
3. After the listed due date, late submissions (up to one week) will be graded at 75%
4. All assignments must be completed using a word processor.
5. Students are responsible to see the instructor about any work missed due to absence.
6. Students who miss a quiz must take the quiz within two classes of the original quiz date.
7. Students are expected to participate as a member of teams
8. Students must pass both the Skills based portion in addition to the Academic portion of the curriculum to pass the course.
9. Student's final grade can only raise one letter grade above the on-line final exam score based on other class assignments.
10. Students are allowed a maximum of three (3) re-takes of chapter quizzes per the semester.
11. Department policy is that if you miss the equivalent of two (2) weeks of classes your final grade will drop by one (1) letter grade.

Services for Students with Disabilities:

Any student with a documented disability may arrange reasonable accommodations. As part of this process, students are encouraged to contact the office of Disability Services for Students as early in the semester as possible (<http://www.ccri.edu/dss/index.shtml>).

Enabling Closed Caption:

All embedded videos on the Cisco Academy website have the ability to display closed captioning in multiple languages. The procedure to enable this feature is as follows;

Video - The Cisco Networking Academy Learning Experience

World changers aren't born. They are made. Since 1997 Cisco Networking Academy has been working towards a single goal: the educating and skill building of the next generation of talent required for the digital economy.

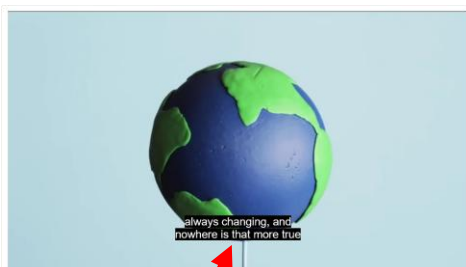
Click Play to how Cisco Networking Academy to learn how we use technology to make the world a better place.



Closed Caption Option



When selected the user can choose what language they would like to see displayed from available languages.



After selecting "English" the appropriate text is now displayed. *This needs to be done for each embedded video individually.*

Netiquette Policy:

- Respect others and their opinions. In online learning, students from various backgrounds come together to learn. It is important to respect their feelings and opinions though they may differ from your own.
- Tone down your language. Given the absence of face-to-face clues, written text can easily be misinterpreted. Avoid the use of strong or offensive language and the excessive use of exclamation points. Review before posting to remove any strong language.
- Keep personal discussions off the class discussion board.
- Do not type all capitals, which is difficult to read, and has come to be considered the electronic version of "shouting."
- Do be courteous, even when you disagree, with your instructors as well as your classmates, and always provide clear, logical support for your views.
- Avoid inappropriate material.
- Be forgiving. If someone states something that you find offensive, mention this directly to the instructor. Remember that the person contributing to the discussion might be new to this form of communication. What you find offensive may quite possibly have been unintended and can best be cleared up by the instructor.
- Think before you hit the send button. Think carefully about the content of your message before contributing it. Once sent to the group there is no taking it back. Grammar and spelling errors reflect on you and your audience might not be able to decode misspelled words or poorly constructed sentences. It can also adversely affect your grade.
- Escalate your issues privately via email versus discussion forums. Should you have a disagreement with an instructor or classmate it is best to send an individual email to that individual. Do not argue your case in the discussion forum.
- Brevity is best. Be as concise as possible when contributing to a discussion. Your points might be missed if hidden in a flood of text.

Avoid disciplinary action. Any type of online behavior that is perceived as disrespectful to a fellow student or instructor, or anything that has the potential to be perceived as less than courteous is unacceptable and can be subject to disciplinary action by the Chair of the department. Repetition of such behavior can result in expulsion from the class.

Technical Requirements:

Learning requires certain technical requirements to participate actively and be successful. At the minimum, students must have access to a computer and stable Internet connection. Many courses at CCRI require certain technical requirements to participate actively and be successful. View [Set Up Your Tech](#) to learn more about technical requirements.

CISCO Netacad:

Students need a stable Internet connection. Chrome, Firefox, or Edge web browsers can be used. You should clear your web browser cache, which is found in the settings of the web browser. If you do not do this, some of your labs will not work correctly. Chromebooks will not work for your labs. You must have a computer/laptop running Windows 10 or better or MAC.

CCRI Computer Labs:

The academic computer lab is available for CCRI students and allows access to computers with required software. Information regarding CCRI's academic computer labs is available at the following link: [Academic Computer Labs](#).

MS Office 365:

Microsoft Office 365 is available for all CCRI students to download. This version of Office will be accessible as long as you are actively enrolled at CCRI. It is recommended that students [download MS 365 to their computers](#) for access to MS Word, PowerPoint, and Excel offline. If you use other programs, I may not be able to open the files.

MS OneDrive:

[OneDrive](#) is a clouded-based storage system that lets CCRI students store, share and organize files, photos and favorites on Windows servers, and access them from any computer with an Internet connection. You will need and know how to use a computer or mobile device with Internet access. You will also need one of the following web browsers: Edge, Firefox, Chrome, or Safari (Mac only). However, if you put something into OneDrive, you must give me permission to access the file. Once I click on allow, you will get an email that you give permission again before I can view the data.

Academic Integrity:

Academic integrity is vital to an institution of higher education. The integrity of your work – that it represents your independent thought and effort and that it properly acknowledges the work of others – is essential to the awarding of credit and to the development of your academic potential. As such, instances of academic dishonesty – cheating, plagiarism, etc., – are extremely serious academic offenses that should not be overlooked. Students should be aware and regularly cautioned that violations of academic integrity may result in suspension or expulsion from the college. For more information, go to the CCRI's Policy on Academic Integrity.

Managing Life Crisis and Finding Support:

Should you encounter an unexpected crisis during the semester (i.e., securing food or housing, addressing mental health concerns, personal safety, managing a financial crisis, and/or dealing with a family emergency, etc.), please reach out to the office of [Community and Social Resources](#). If you are uncomfortable doing so on your own, please know that I can submit a referral on your behalf—just email me or schedule a meeting with me during my office hours.

Veteran Services:

[CCRI Veteran Services Office](#) is committed to being a resource to all VA education beneficiaries. Our mission is to assist veterans, service members, and dependents in the pursuit of their educational goals by maintaining up-to-date information on current programs and resources. Through a combination of experience with the educational system and contacts within the VA, we can help you with any aspect of your higher education.

Mental Health Services:

CCRI is committed to advancing the mental health and wellbeing of its students. If you or someone you know is feeling overwhelmed, depressed, and/or in need of support, services are available.

CCRI has partnered with MySSP (My Student Support Service) to provide 24/7 mental health and well-being support to students, including real-time and scheduled access to professional counselors. All services are confidential and 100% FREE to CCRI students! In addition to MySSP, the Advising and Counseling Center provides one-on-one and group counseling for a variety of problems ranging from typical difficulties students experience (e.g., adjustment to the college setting) to problems associated with acute or long-standing psychological disturbances. For a listing of mental health services on and off campus, visit [Mental Health Services](#).

Student Success Center:

The Student Success Center provides academic assistance through tutoring services; coordinate information and referrals to college resources; seek ways to improve student satisfaction and retention; and help students achieve their goals. Student Success Center staff members help students understand their individual learning needs, develop better study habits and behaviors, and create plans to achieve their goals. For more information about our services, email successcenter@ccri.edu or visit the [website](#). Watch this [video](#), to learn how to book Free CCRI tutoring appointments through Starfish.

Writing Center:

The Writing Center offers a variety of free services, including online and in-person help with prewriting, organization, thesis statements, topic sentences, research papers, revision/editing, and answers to questions. Online help at [Writing Center](#) includes:

- Zoom links for Writing Center Virtual Drop-in Tutoring Sessions
- Virtual Zoom appointments
- Email responses to questions and help with papers
- Website content, such as handouts, practice quizzes, literature analysis, PowerPoint presentations, reading resources, and information about research papers (MLA, APA, and Chicago systems)

In-person appointments can be made by contacting writingcenter@ccri.edu. The Writing Center is available at three of our four campuses to assist CCRI students, faculty, and staff members with different kinds of writing and revision tasks.

Religious & Cultural Observance:

Persons who have religious or cultural observances that coincide with this class should let me know in an email during the first two weeks of the semester. However, if I do not hear from you by the end of the second week of school, I will assume you plan on doing the work for the week.

Explicit Content:

If you are aware of cognitive or emotional triggers that could disrupt your intellectual or mental health, please let me know so that I can be aware in terms of course content.

Title IX and Gender Pronouns:

This course affirms equality and respect for all gendered identities and expressions. Please don't hesitate to correct me regarding your preferred gender pronoun and/or name if different from what is indicated on the official class roster. Likewise, I am committed to nurturing an environment free from discrimination and harassment. Consistent with Title IX policy, please be aware that I, as a responsible employee, am obligated to report information that you provide to me about a situation involving sexual harassment or assault.

Advising:

Your success is the primary focus of the [Advising Center](#). As such, all matriculated students are assigned a trained, professional advisor who will provide support, guidance, and resources to help you navigate your academic journey and maximize your educational experience during your entire time at the Community College of Rhode Island. Recognizing the diverse needs of our student body, your assigned advisor will provide personalized assistance to ensure that your academic, personal, and career goals are met. The services available to you include academic planning and course selection; transfer planning; assistance in understanding college policies and procedures; and referrals to on-and-off-campus resources. Connecting with your assigned advisor is easy. Log in to your Starfish account (include instructions here). We look forward to partnering with you in your journey towards success at the Community College of Rhode Island.

Counseling:

CCRI offers short term and confidential counseling to help students with mental health concerns. The Personal Counseling and Wellness Office offers students a safe environment for one-on-one appointments, assisting with a variety of concerns related to anxiety, depression, or long-standing psychological obstacles. The Personal Counseling and Wellness Office also assists with connecting students with resources and outside agencies offering long-term counseling services. For a list of mental health services on and off campus, please visit [Personal Counseling and Wellness](#).

Finally, counseling services are offered at our four main campuses (Warwick, Lincoln, Providence, and Newport) M-F 8:00 am to 4 pm. To schedule an appointment, please email us at: counseling@ccri.edu

TELUS Health:

CCRI has also partnered with TELUS Health, a counseling service available to students 24/7, free of charge. TELUS Health offers virtual walk-in's and scheduled appointments, with access to professional counselors. To learn more about TELUS Health, please click the link here: [visit TELUS Health](#)

The Benefits Hub:

The Benefits Hub connects students to on and off campus resources. If students are couch surfing, need groceries, childcare, transportation, or some other form of assistance, please contact: 401.825-1024 (office), or BenefitsHub@ccri.edu If you are uncomfortable doing so on your own, please know that I can submit a referral on your behalf - just email me or schedule a meeting with me during office hours.

Tutoring Center:

Students use Starfish to schedule appointments to meet with CCRI tutors and academic coaches. Appointments are offered in-person and online with day, evening, and weekend availability. All services are at no cost to students.

Visit [The Tutoring Center](#) or email tutoring@ccri.edu to learn more about our services.

Connect with a Tutor:

CCRI employs tutors recommended by CCRI faculty to provide tutoring for their courses. Tutoring helps students learn course material for a specific class by clarifying course concepts and getting practice with course materials. Students do not have to be in jeopardy of failing to get help from a tutor. Click [here to watch the video directions](#) on how to schedule appointments through Starfish.

Partner with An Academic Coach:

Academic coaching is a personalized student-coach partnership with appointments tailored to your individual needs. A coach can help you with organizational and study strategies. One-time appointments or a series of consultations throughout the semester are available. Click [here to watch the video directions](#) on how to schedule appointments through Starfish.

Pear Deck Tutor:

Pear Deck Tutor is a private online tutoring company that CCRI has partnered with to supplement our CCRI Tutoring program. It is available 24/7 and students are allowed up to three hours per week at no charge! Students access Pear Deck Tutor through their CCRI Blackboard account.

CCRI Library:

The CCRI Library provides a welcoming environment for individual and collaborative learning. Each campus has a library with access to print and online books, journals, and other resources.

Our catalog and databases can be accessed on campus or off campus. Librarians are available to assist students individually with research questions. We also work with faculty to provide specialized library instruction classes and offer [courses in information literacy and research skills](#).

Public Safety:

The CCRI College Police Department, also referred to as the Campus Police Department, is staffed with full-time, sworn police officers augmented with nonsworn public safety officers and dispatchers. We provide law enforcement services to all four CCRI campuses when the campuses are open and 24/7 services through our HQ's located at the Knight Campus in Warwick.

Our enforcement jurisdiction covers all four CCRI properties. The services we provide for the College community include responses to all emergencies; arrests for criminal violations; police reports; initial criminal investigations occurring on a campus or having a nexus to the College; referral services to outside law enforcement and social agencies; all Clery Act requirements; traffic enforcement, accident investigations and accident reporting on campus.

The College Police Department is also responsible for building and grounds security; College identification access control; lost and found; annual emergency exercises; educational training opportunities concerning public safety; and escorts per request. The CCRI College Police Department is an accredited law enforcement agency with the Rhode Island Police Accreditation Commission and maintains solid, working relationships with all other law enforcement agencies throughout the State of Rhode Island.

Contact us at 401-825-2109 for routine business and 401-825-2000 for on-campus emergencies. 911 is always acceptable for any emergency and will be forwarded to our dispatch center for a quick response.

Civil Rights (Know Your Rights):**Pregnant and Parenting Students:**

CCRI is proud to welcome and support pregnant and parenting students on their path to success. If you need an accommodation, excused absence, or other resource or campus support to successfully complete your time at CCRI while pregnant or parenting, please contact the Title IX Coordinator via email at titleixcoordinator@ccri.edu or by phone at (401) 825-1126.

Discrimination and Harassment:

CCRI prohibits students and employees from engaging in discrimination and harassment based on any individual's race, color, creed, national or ethnic origin, gender, gender identity or expression, religion, disability, age, sexual orientation, genetic information, marital status, citizenship status, veteran status, and any other legally protected characteristic. If you believe you have been subjected to discrimination or harassment, you can report such behavior to the Title IX Coordinator via email at titleixcoordinator@ccri.edu, by phone at (401) 825-1126

[Nondiscrimination Policy and Complaint Procedures](#)

Sexual Harassment and Sexual Misconduct

CCRI prohibits all forms of unlawful sexual harassment and sexual misconduct, which includes (but is not limited to) dating/domestic violence and stalking. If you believe you have been subjected to sexual harassment or sexual misconduct, you can report such behavior to the Title IX Coordinator via email at titleixcoordinator@ccri.edu or by phone at (401) 825-1126.

[Title IX Sexual Harassment Policy and Procedures \(S-17\)](#)

[Nondiscrimination Policy and Complaint Procedures](#)

Chapter Exam Topics:

LI	Chapter/Section/Topic Titles	Items
1	Explain network security.	5
1.1	Describe the current network security landscape.	
1.2	Describe how all types of networks need to be protected.	
2	Explain the various types of threats and attacks.	6
2.1	Explain how network threats have evolved.	
2.2	Describe the various types of attack tools used by threat actors.	
2.3	Describe types of malware.	
2.4	Explain reconnaissance, access, and social engineering network attacks.	
2.5	Explain Denial of Service, buffer overflow, and evasion attacks.	
3	Explain tools and procedures to mitigate the effects of malware and common network attacks.	4
3.1	Describe methods and resources to protect the network.	
3.2	Explain several types of network security policies.	
3.3	Explain the purpose of security platforms.	
3.4	Describe the techniques used to mitigate common network attacks.	
3.5	Explain how to secure the three functional areas of Cisco routers and switches.	
4	Configure secure administrative access.	6
4.1	Explain how to secure a network perimeter.	

4.2	Use the correct commands to configure passwords on a Cisco IOS device.	
4.3	Use the correct commands to configure enhanced security for virtual logins.	
4.4	Configure an SSH daemon for secure remote management.	
Modules 1-4: Securing Networks Group Exam		21
5	Configure command authorization using privilege levels and role-based CLI.	7
5.1	Use the correct commands to configure administrative privilege levels to control command availability.	
5.2	Use the correct commands to configure role-based CLI access to control command availability.	
6	Implement the secure management and monitoring of network devices.	7
6.1	Explain how the Cisco IOS resilient configuration feature and Secure Copy are used to secure the Cisco IOS image and configuration files.	
6.2	Use the correct commands for AutoSecure to enable security on IOS-based routers.	
6.3	Use the correct command to configure routing protocol authentication.	
6.4	Compare in-band and out-of-band management access.	
6.5	Explain how to configure syslog to log system events.	
6.6	Configure NTP to enable accurate timestamping between all devices.	
6.7	Configure SNMP to monitor system status.	
7	Configure AAA to secure a network.	7
7.1	Describe the characteristics of AAA	
7.2	Configure AAA authentication to validate users against a local database.	
7.3	Describe the server-based AAA protocols.	
7.4	Configure server-based AAA authentication on Cisco routers.	
7.5	Use the correct commands to configure server-based AAA authorization and accounting.	
Modules 5-7: Monitoring and Managing Devices Group Exam		21
8	Implement access control lists (ACLs) to filter traffic and mitigate network attacks.	7
8.1	Describe standard and extended IPv4 ACLs.	
8.2	Explain how ACLs use wildcard masks.	
8.3	Explain how to configure ACLs.	
8.4	Use sequence numbers to edit existing standard IPv4 ACLs.	
8.5	Implement ACLs.	
8.6	Use ACLs to mitigate common network attacks.	
8.7	Configure IPv6 ACLs using CLI.	

9	Explain how firewalls are implemented to provide network security.	7
9.1	Explain how firewalls are used to help secure networks.	
9.2	Explain design considerations for implementing firewall technologies	
10	Implement Zone-Based Policy Firewall using CLI.	7
10.1	Explain how Zone-Based Policy Firewalls are used to help secure a network.	
10.2	Explain the operation of a Zone-Based Policy Firewall.	
10.3	Configure a Zone-Based Policy Firewall with CLI.	
Modules 8-10: ACLs and Firewalls Group Exam		21
11	Explain how network-based Intrusion Prevention Systems are used to help secure a network.	10
11.1	Explain the functions and operations of IDS and IPS systems.	
11.2	Explain how network-based IPS is implemented.	
11.3	Describe the IPS technologies that are available on Cisco ISR routers.	
11.4	Configure Cisco SPAN.	
12	Explain how signatures are used to detect malicious network traffic.	10
12.1	Describe IPS signatures.	
12.2	Explain how the Cisco Snort IPS provides network security services.	
12.3	Explain how to configure Snort IPS on a Cisco ISR G2.	
Modules 11-12: Intrusion Prevention Group Exam		20
13	Explain endpoint vulnerabilities and protection methods.	10
13.1	Describe endpoint security and the enabling technologies.	
13.2	Explain the functions of 802.1x components.	
14	Implement security measures to mitigate Layer 2 attacks.	10
14.1	Describe Layer 2 vulnerabilities.	
14.2	Describe MAC address spoofing attacks.	
14.3	Configure port security.	
14.4	Explain how to mitigate VLAN attacks.	
14.5	Use correct command to implement DHCP Snooping for attack mitigation.	
14.6	Use correct command to mitigate ARP attacks.	
14.7	Use the correct command to mitigate address spoofing attacks.	
14.8	Explain the operation of Spanning Tree Protocol.	
14.9	Configure security measures to mitigate STP attacks.	
Modules 13-14: Layer 2 and Endpoint Security Group Exam		20
15	Explain how the types of encryption, hashes, and digital signatures work together to provide confidentiality, integrity, and authentication.	7
15.1	Explain the requirements of secure communications including integrity, authentication, and confidentiality.	

15.2	Describe cryptography.	
15.3	Describe cyrptoanalysis.	
15.4	Describe cyrptology.	
16	Explain how cryptography is used to ensure data integrity and authenticity.	7
16.1	Explain the role of cryptography in ensuring the integrity and authenticity of data.	
16.2	Describe the components of key management.	
16.3	Explain how cryptographic approaches enhance data confidentiality.	
17	Explain how a public key infrastructure is used to ensure data confidentiality and provide authentication.	7
17.1	Explain public key cryptography.	
17.2	Explain how the public key infrastructure functions.	
17.3	Explain how the use of cryptography affects cybersecurity operations.	
Modules 15-17: Cryptography Group Exam		21
18	Explain the purpose of VPNs.	10
18.1	Describe VPNs and their benefits.	
18.2	Compare site-to-site and remote-access VPNs.	
18.3	Describe the IPsec protocol and its basic functions.	
18.4	Compare AH and ESP protocols.	
18.5	Describe the IKE protocol.	
19	Configure a site-to-site IPsec VPN, with pre-shared key authentication, using CLI.	10
19.1	Describe IPsec negotiation and the five steps of IPsec configuration.	
19.2	Use the correct commands to configure an ISAKMP policy.	
19.3	Use the correct commands to configure the IPsec policy.	
19.4	Use the correct commands to configure and apply a Cryptomap.	
19.5	Configure an Ipsec VPN.	
Modules 18-19: VPNs Group Exam		20
20	Explain how the ASA operates as an advanced stateful firewall.	7
20.1	Compare ASA solutions to other routing firewall technologies.	
20.2	Describe three ASA deployment scenarios.	
21	Implement an ASA firewall configuration.	6
21.1	Explain how to configure an ASA-5506-X with FirePOWER Services.	
21.2	Configure management settings and services on a ASA 5506-X firewall.	
21.3	Explain how to configure object groups on an ASA.	
21.4	Use the correct commands to configure access lists with object groups on an ASA.	
21.5	Use the correct commands to configure an ASA to provide NAT services.	
21.6	Use the correct commands to configure access control using the local database and AAA server.	

21.7	Configure service policies on an ASA.	
22	Describe the various techniques and tools used for network security testing.	7
22.1	Describe the techniques used in network security testing.	
22.2	Describe the tools used in network security testing	
Modules 20-22: ASA Group Exam		20

Final Exam Subjects:

Module	Chapter/Section/Topic Titles	Items
1	Explain network security.	2
2	Explain the various types of threats and attacks.	2
3	Explain tools and procedures to mitigate the effects of malware and common network attacks.	2
4	Configure secure administrative access.	2
5	Configure command authorization using privilege levels and role-based CLI.	2
6	Implement the secure management and monitoring of network devices.	3
7	Configure AAA to secure a network.	3
8	Implement access control lists (ACLs) to filter traffic and mitigate network attacks.	3
9	Explain how firewalls are implemented to provide network security.	3
10	Implement Zone-Based Policy Firewall using CLI.	3
11	Explain how network-based Intrusion Prevention Systems are used to help secure a network.	3
12	Explain how signatures are used to detect malicious network traffic.	3
13	Explain endpoint vulnerabilities and protection methods.	3
14	Implement security measures to mitigate Layer 2 attacks.	3
15	Explain how the types of encryption, hashes, and digital signatures work together to provide confidentiality, integrity, and authentication.	3
16	Explain how cryptography is used to ensure data integrity and authenticity.	3
17	Explain how a public key infrastructure is used to ensure data confidentiality and provide authentication.	3
18	Explain the purpose of VPNs.	3
19	Configure a site-to-site IPsec VPN, with pre-shared key authentication, using CLI.	3
20	Explain how the ASA operates as an advanced stateful firewall.	2
21	Implement an ASA firewall configuration.	3
22	Describe the various techniques and tools used for network security testing.	3
Final Exam		60

Network Security 1.0

Class	Lesson	Module Group Exam	Subjects	Labs/Projects
Jan 22	1 & 2		Module 1: Securing Networks Module 2: Network Threats	Video 1.1.5: Anatomy of an Attack Video 2.4.3: Reconnaissance Attacks Animation 2.3.6: Worm Components Animation 2.4.2: Reconnaissance Attacks Animation 2.4.4: Access Attacks Video 2.4.5: Access and Social Engineering Attacks Video 2.5.1: Denial of Service Attacks Video 2.5.4: Mirai Botnet
Jan 27			Laboratory Exercises	Lab 2.4.8: Social Engineering
Jan 29	3 & 4		Module 3: Mitigating Threats Module 4: Secure Device Access	Video 3.3.4: Cisco SecureX Demonstration Video 4.3.6: Configure Passwords and Enhanced Login Security Video 4.4.1: The Need for SSH
Feb 3			Laboratory Exercises	Lab 4.4.7: Configure Network Devices with SSH Lab 4.4.9: Configure Network Devices
Feb 5		1 (1-4)	Module 5: Assigning Administrative Roles Module 6: Device Monitoring and Management Labs Due February 11, 2025 @ Midnight	Animation 5.2.2: Role-Based Views Animation 6.3.2: Routing Protocol Spoofing Lab 6.6.4: Packet Tracer - Configure and Verify NTP Lab 6.7.12: Packet Tracer - Configure Cisco Devices for Syslog, NTP, and SSH Operations
Feb 10			Laboratory Exercises	Lab 5.2.5: Configure Administrative Roles Lab 6.2.7: Configure Automated Security Features Lab 6.3.6: Basic Device Configuration and OSPF Authentication
Feb 12	7 & 8		Module 7: Authentication, Authorization, and Accounting (AAA) Module 8: Access Control Lists Labs Due Feb 18, 2025 @ Midnight	Animation 7.3.4: Process for TACACS+ Authentication Animation 7.3.5: Process for RADIUS Authentication Video 7.4.6: Configure a Cisco Router to Access a AAA RADIUS Server Interactive Activity 8.5.9: Configuring Standard ACLs Interactive Activity 8.5.10: Creating an Extended ACL Statement Lab 7.2.6: Packet Tracer - Configure Local AAA for Console and VTY Access Lab 8.6.5: Packet Tracer - Configure IP ACLs to Mitigate Attacks Lab 8.7.4: Packet Tracer - Configure IPv6 ACLs
Feb 17			Laboratory Exercises	Lab 7.4.7: Install the Virtual Machine Lab 7.4.8: Configure Server-Based Authentication with RADIUS

Class	Lesson	Module Group Exam	Subjects	Labs/Projects
Feb 19	9 & 10	2 (5-7)	Module 9: Firewall Technologies Module 10: Zone-Based Policy Firewalls Labs Due February 25, 2025 @ Midnight	Animation 9.1.1: Firewalls Video 10.3.10: Video Demonstration of ZPF Lab 9.2.4: Packet Tracer - Identify Packet Flow
Feb 24			Laboratory Exercises	Lab 10.3.12: Configure ZPFs
Feb 26	11 & 12	3 (8-10)	Module 11: IPS Technologies Module 12: IPS Operation and Implementation Labs Due March 4, 2025 @ Midnight	Lab 11.4.6: Packet Tracer - Implementing a Local SPAN
March 3	13 & 14	4 (11-12)	Module 13: Endpoint Security Module 14: Layer 2 Security Considerations Labs Due March 16, 2025 @ Midnight	Video 14.4.8: Private VLAN Tutorial and Demonstration Video 14.6.2: ARP Spoofing Animation 14.8.1: STP Normal Operation Animation 14.8.2: STP Recalculation Animation 14.8.3: Layer 2 Loops Animation 14.8.9: Observe STP Operation Lab 14.3.11: Packet Tracer - Implement Port Security Lab 14.8.10: Packet Tracer - Investigate STP Loop Prevention Lab 14.9.11: Packet Tracer - Layer 2 VLAN Security
March 5			Laboratory Exercises	Lab 14.9.9: Configure STP Security
March 17	15 & 16	5 (13-14)	Module 15: Cryptographic Services Module 16: Basic Integrity and Authenticity	Video 16.3.8: Cryptography
March 19			Laboratory Exercises	Lab 16.3.10: Encrypting and Decrypting Data Using OpenSSL Lab 16.3.11: Encrypting and Decrypting Data Using a Hacker Tool Lab 16.3.12: Examining Telnet and SSH in Wireshark
March 24	17 & 18		Module 17: Public Key Cryptography Module 18: VPNs	Video 18.3.1: IPsec Concepts Video 18.3.8: IPsec Transport and Tunnel Modes Video 18.5.4: IKE Phase 1 and Phase 2
March 26			Laboratory Exercises	Lab 17.2.7: Certificate Authority Stores
March 31	19	6 (15-17)	Module 19: Implement Site-to-Site IPsec VPNs with CLI	Video 19.5.4: Site-to-Site IPsec VPN Configuration
April 2			Laboratory Exercises	Lab 19.5.6: Configure a Site-to-Site VPN
April 7	20, 21, 22	7 (18-19)	Module 20: Introduction to the ASA Module 21: ASA Firewall Configuration Module 22: Network Security Testing	Video 20.1.2: Cisco ASA Next-Generation Firewall Appliances Video 20.1.5: Collect Firepower Threat Defense (FTD) Packet captures with Firepower Management Center (FMC)

Class	Lesson	Module Group Exam	Subjects	Labs/Projects
April 9			OPEN	
April 14			OPEN	
April 16			Laboratory Exercises	Lab 21.2.10: Configure ASA Basic Settings Using the CLI Lab 21.7.6: Configure ASA Network Services, Routing, and DMZ with ACLs Using CLI
April 21			Laboratory Exercises	Lab 21.9.5: Configure ASA Basic Settings and Firewall Using ASDM Lab 21.9.6 Configure Clientless Remote Access SSL VPNs Using ASA 5506-X ASDM
April 23		8 (20-22)	Research Paper Presentation / Review	
April 23 - May 7		Additionally: All Chapter Exams will be active from April 23, 2025 @ 9:00 PM until May 7, 2025 @ 5:00 PM As a reminder, each student is allowed three (3) retakes total of all Chapter Exams.		
April 28	Three (3) Hour Practical / Final Exam / Notebook			
April 30	Three (3) Hour Practical / Final Exam / Notebook			
May 5	Three (3) Hour Practical / Final Exam / Notebook			
May 7	Three (3) Hour Practical / Final Exam / Notebook			

All items in this document are subject to change!